

NOTE:

1. CONCRETE SHALL NOT BE PLACED AROUND JOINTS AND BOLTS. COVER ALL METAL CONTACT AREAS WITH AN 8 MIL. POLY WRAP PRIOR TO CONCRETE PLACEMENT.
2. IN THE ABSENCE OF A SOIL REPORT, ALL THRUST BLOCKS SHALL BE SIZED ON THE BASIS OF A MAXIMUM LATERAL BEARING VALUE OF 800 P.S.F. AND A THRUST RESULTING FROM 150% OF THE WATER LINE STATIC PRESSURE.

TABLE OF BEARING AREAS IN SQ. FT FOR CONCRETE THRUST BLOCKING

SIZE	BENDS				TEES*	GATE VALVES	DEAD ENDS	CROSSW/ 1BRANCH PLUGGED	CROSSW/ 2 BRAN. PLUGGED
	90°	45°	22 1/2°	11 1/4°					
3	1.0	0.0	0.3	0	0.7	0.5	0.7	0.7	0.7
4	1.8	1.0	0.5	0	1.3	0.5	1.3	1.3	1.3
6	4.0	2.2	1.1	0	2.8	0.7	2.8	2.8	2.8
8	7.1	3.8	2.0	1.0	5.0	2.4	5.0	5.0	5.0
10	11.1	6.0	3.0	1.5	7.8	4.5	7.8	7.8	7.8
12	16.0	8.6	4.4	2.2	11.3	7.3	11.3	11.3	11.3
14	21.7	11.8	6.0	3.0	15.4	11.0	15.4	15.4	15.4
15	25.0	13.5	7.0	3.5	17.6		17.6	17.6	17.6
16	28.4	15.3	8.0	4.0	20.0		20.0	20.0	20.0
18	36.0	19.4	10.0	5.0	25.4		25.4	25.4	25.4
20	44.2	24.0	12.2	6.1	31.4		31.4	31.4	31.4
21	49.0	26.5	13.5	6.8	34.6		34.6	34.6	34.6
22	54.0	29.0	14.8	7.4	38.0		38.0	38.0	38.0
24	64.0	34.5	17.7	8.8	45.0		45.0	45.0	45.0
30	100.0	54.0	27.6	13.8	71.0		71.0	71.0	71.0
36	144.0	78.0	40.0	20.0	102.0		102.0	102.0	102.0

*SIZE IS BRANCH SIZE.

FOR 100 P.S.I. INTERNAL STATIC PRESSURE AND 1000 LBS.PER SQ. FT. SOIL BEARING CAPACITY.

*ALL VALVES, TEES, CROSSES AND BENDS SHALL ALSO BE FITTED WITH MECHANICAL RESTRAINTS, SUCH AS MEGA LUG OR ROMA GRIP WITH FLUOROPOLYMER COATED BOLTS AND NUTS.

AREAS GIVEN IN TABLE ARE BASED UPON AN INTERNAL STATIC PRESSURE OF 100 P.S.I AND A SOIL BEARING CAPACITY OF 1000 LBS PER SQ. FT. BEARING AREAS FOR ANY PRESSURE AND SOIL BEARING CAPACITY MAY BE OBTAINED BY MULTIPLYING THE TABULATED VALUES BY A CORRECTION FACTOR "F".

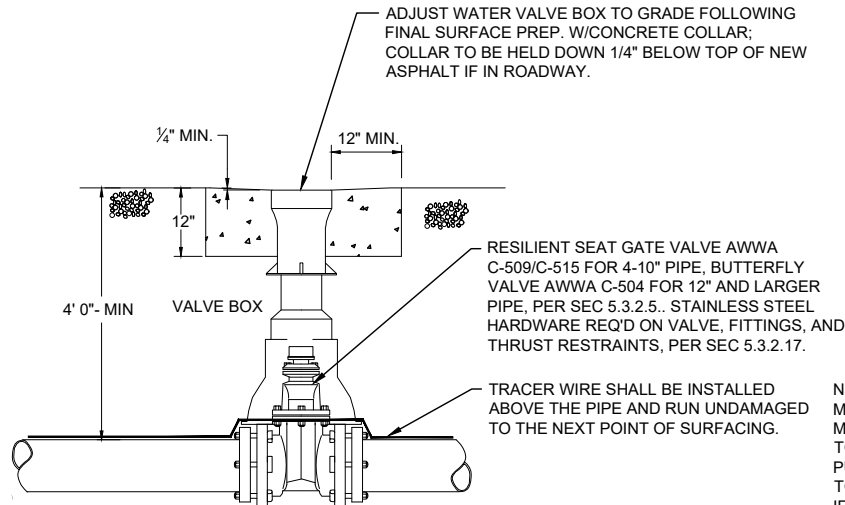
$$F = \frac{\text{ACTUAL SPECIFIED TEST PRESSURE IN HUNDREDS OF LBS/SQ. IN.}}{\text{ACTUAL SOIL BEARING CAPACITY IN THOUSANDS OF LBS.}}$$

EXAMPLE: TO FIND BEARING AREA FOR 8"-90° BEND WITH A STATIC INTERNAL PRESSURE OF 150 P.S.I AND WITH A SOIL BEARING CAPACITY OF 3000 LBS. PER SQ. FT.

$$F = 1.5 / 3 = 0.5 \text{ TABULATED VALUE} = 7.1 \text{ SQ. FT.} \\ 0.5 \times 7.1 = 3.56 \sim 4 \text{ SQ. FT. } (\sim 0\text{R } 2\text{FT. LONG BY } 2\text{FT. HIGH.})$$

1 THRUST BLOCK DETAIL
APPLIES TO ALL PRESSURE PIPE

NTS



NOTE: VALVE BOX, RISER AND LID MUST COME FROM THE SAME MFR.. BE INTENDED FOR USE TOGETHER AND SHALL BE WITHIN PUBLISHED DIMENSION TOLERANCES. IF LOCATED IN ROADWAY W/ SPEED LIMIT OF 40 MPH OR GREATER, LID SHALL BE HEAVY AND EXTRA DEEP.

2 TYPICAL VALVE DETAIL

NTS

r:\2001 - twwstandards\2025\twwwid construction standard details 2025 rev-0.dwg

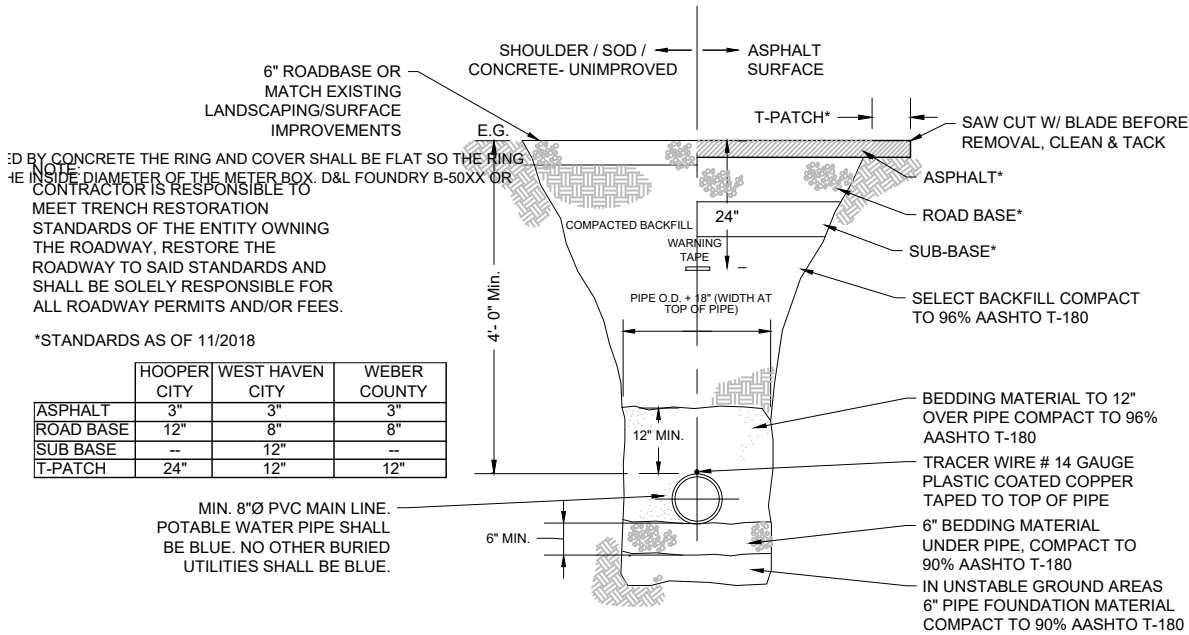
DRAFTED: RP	DEVIATIONS FROM STANDARDS MUST BE APPROVED BY TAYLOR WEST WEBER WATER IMPROVEMENT DISTRICT. UTAH DDW APPROVAL 6/2020
DESIGNED: RP/MD	
CHECKED: RR/MD	
REV 1:	
REV 2:	
REV 3:	
REV 4:	
REV 5:	



STANDARD WATER DETAILS
TAYLOR WEST WEBER
WATER IMPROVEMENT DISTRICT
THRUST BLOCK DETAIL
TYPICAL VALVE DETAIL

SHEET 1

GARDNER ENGINEERING
CIVIL • LAND PLANNING
MUNICIPAL • LAND SURVEYING
1880 W 2100S, WEST HAVEN, UT 84405
P 801.476.0202 F 801.476.0066



BY CONCRETE THE RING AND COVER SHALL BE FLAT SO THE RING IS INSIDE DIAMETER OF THE METER BOX. D&L FOUNDRY B-50XX OR CONTRACTOR IS RESPONSIBLE TO MEET TRENCH RESTORATION STANDARDS OF THE ENTITY OWNING THE ROADWAY, RESTORE THE ROADWAY TO SAID STANDARDS AND SHALL BE SOLELY RESPONSIBLE FOR ALL ROADWAY PERMITS AND/OR FEES.

*STANDARDS AS OF 11/2018

	HOOPER CITY	WEST HAVEN CITY	WEBER COUNTY
ASPHALT	3"	3"	3"
ROAD BASE	12"	8"	8"
SUB BASE	--	12"	--
T-PATCH	24"	12"	12"

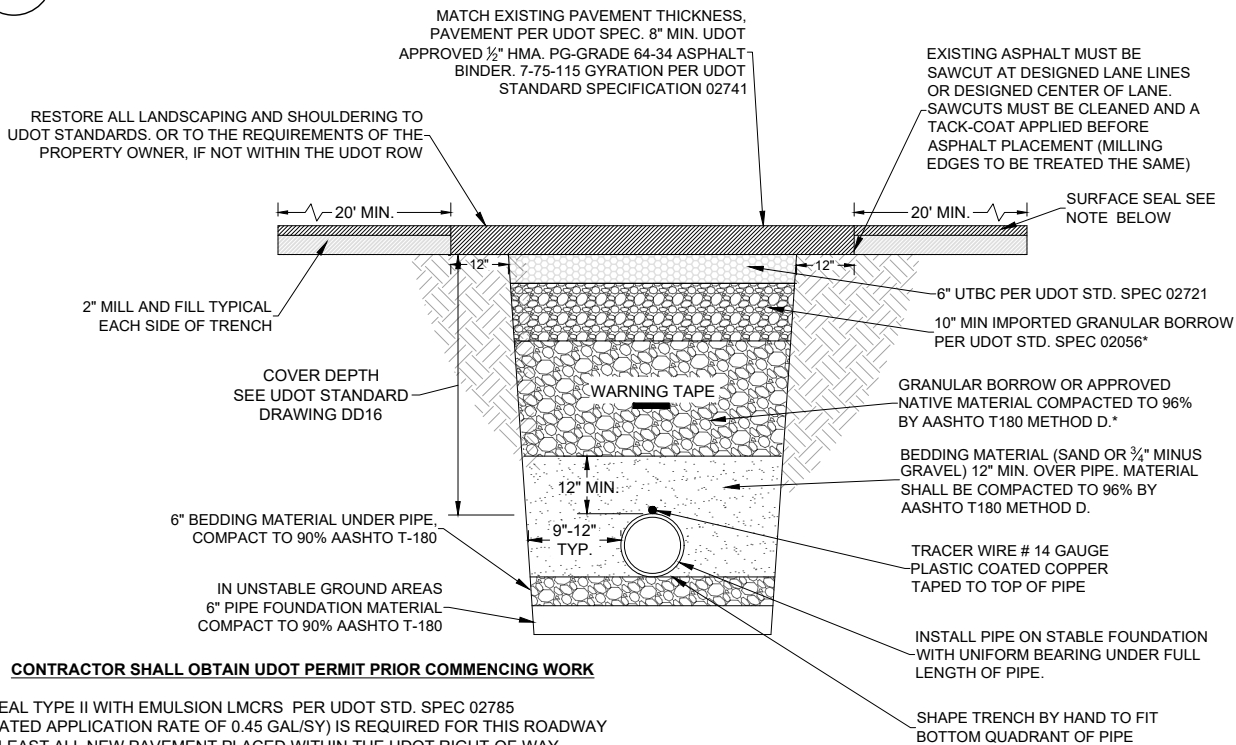
MIN. 8"Ø PVC MAIN LINE. POTABLE WATER PIPE SHALL BE BLUE. NO OTHER BURIED UTILITIES SHALL BE BLUE.

NOTE:

- WATER & SEWER LINES SHALL BE INSTALLED A MINIMUM OF 10 HORIZONTAL FEET FROM EACH OTHER.
- WHERE A WATER MAIN AND A SEWER MAIN MUST CROSS, THE WATER MAIN SHALL BE AT LEAST 18" ABOVE THE SEWER MAIN.
- SEPARATION DISTANCES ARE TO BE MEASURED EDGE-TO-EDGE.
- WATER MAINS SHALL NOT BE INSTALLED IN THE SAME TRENCH WITH EITHER SEWER OR SECONDARY PIPES.
- IF THESE STANDARDS CANNOT BE MET AN EXCEPTION TO THE STANDARD MAY BE POSSIBLE. THE ENTITY SEEKING THE EXCEPTION SHALL INITIATE AND PURSUE A REQUEST FOR A SEPARATION EXCEPTION WITH THE STATE DIVISION OF DRINKING WATER, IN ACCORDANCE WITH R309-550-7 OF THE STATE OF UTAH ADMINISTRATIVE RULES.

3A TYPICAL TRENCH SECTION

NTS



NOTE: CONTRACTOR SHALL OBTAIN UDOT PERMIT PRIOR COMMENCING WORK

CHIP SEAL TYPE II WITH EMULSION LMCRS PER UDOT STD. SPEC 02785 (ESTIMATED APPLICATION RATE OF 0.45 GAL/SY) IS REQUIRED FOR THIS ROADWAY ON AT LEAST ALL NEW PAVEMENT PLACED WITHIN THE UDOT RIGHT-OF-WAY.

ALL CONSTRUCTION WITHIN THE UDOT RIGHT-OF-WAY SHALL CONFORM TO THE MOST CURRENT UDOT STANDARD DRAWING AND SPECIFICATIONS, FOUND AT UDOT.UTAH.GOV/GO/2017 STANDARDS.

* FLOWABLE FILL MAY BE REQUIRED BY UDOT PERMIT.

3B UDOT CROSSING TRENCH DETAIL

NTS

DRAFTED: RP	DEVIATIONS FROM STANDARDS MUST BE APPROVED
DESIGNED: RP/MD	BY TAYLOR WEST WEBER WATER IMPROVEMENT
CHECKED: RR/MD	DISTRICT. UTAH DDW APPROVAL 6/2020
REV 1:	3A: 2022-01-21, PIPE SIZE, TYPE, COLOR
REV 2:	
REV 3:	
REV 4:	
REV 5:	



STANDARD WATER DETAILS
TAYLOR WEST WEBER
WATER IMPROVEMENT DISTRICT
TYPICAL TRENCH DETAIL
UDOT TRENCH DETAIL

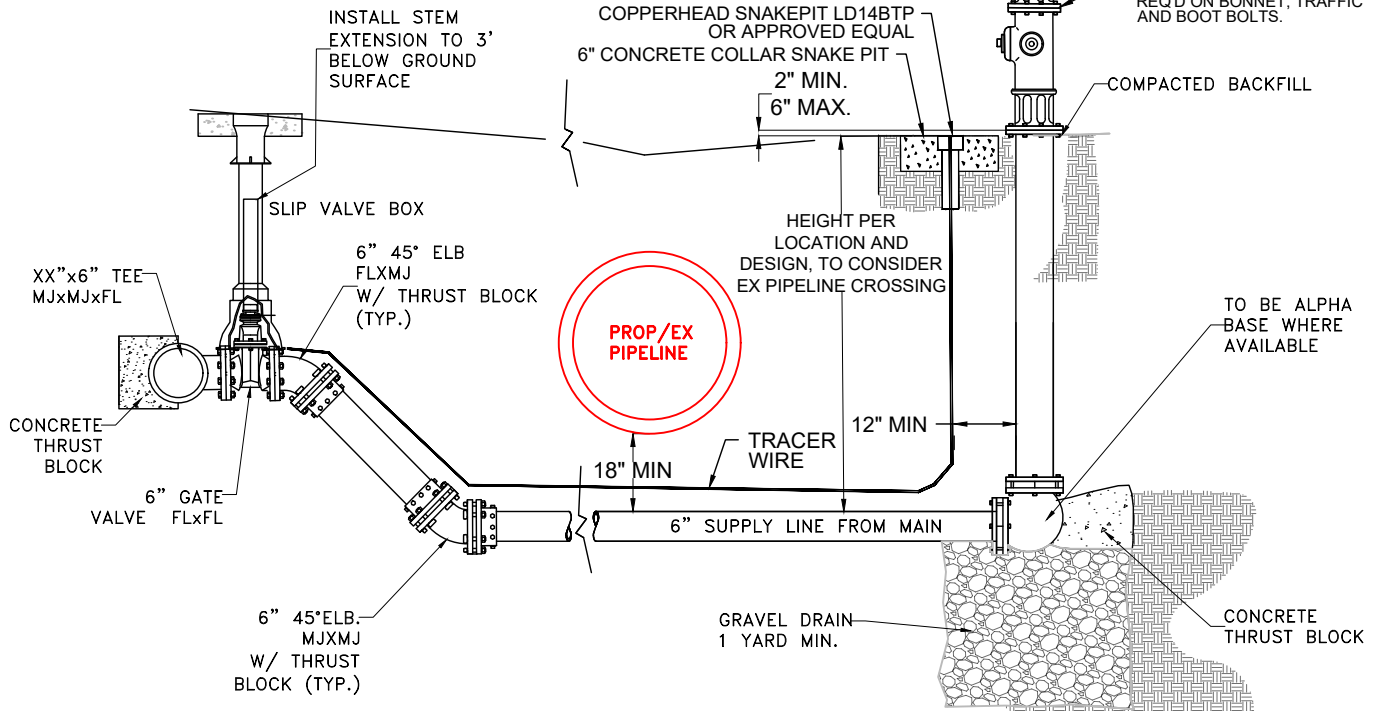
SHEET 2



GARDNER ENGINEERING
CIVIL • LAND PLANNING
MUNICIPAL • LAND SURVEYING
1880 W 2100S, WEST HAVEN, UT 84405
P 801.476.0202 F 801.476.0066

DETAIL TO PROVIDE INFORMATION ON LOOPING FOR CONFLICT AVOIDANCE. STANDARD DETAIL ITEMS STILL APPLY IN GENERAL TO HYDRANT ASSEMBLY INSTALLATION.

FIRE HYDRANT 5 1/4". SEE SPECS SEC 5.3.2.4 FOR FIRE HYDRANTS. STAINLESS STEEL NUTS AND BOLTS REQ'D ON BONNET, TRAFFIC AND BOOT BOLTS.

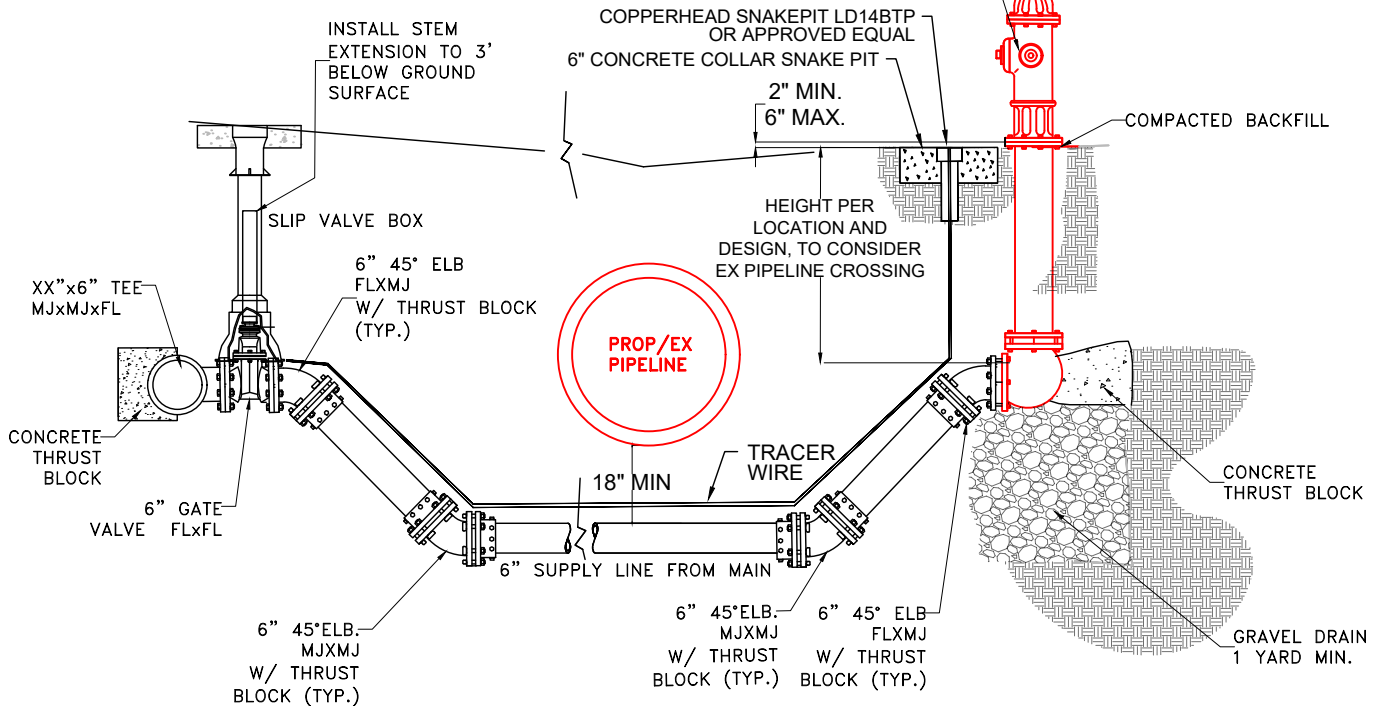


5A NEW HYDRANT- HALF LOOP

NTS

DETAIL TO PROVIDE INFORMATION ON LOOPING FOR CONFLICT AVOIDANCE. STANDARD DETAIL ITEMS STILL APPLY IN GENERAL TO HYDRANT ASSEMBLY INSTALLATION.

REUSE EXISTING HYDRANT EX. BURY STANDPIPE WITH RELOCATION AND CONNECTION TO NEW WATERLINE



5B EX HYDRANT- FULL LOOP

NTS

r:\2001 - twwstandards\2025\twwid construction standard details 2025 rev-0.dwg

DRAFTED: RP	DEVIATIONS FROM STANDARDS MUST BE APPROVED BY TAYLOR WEST WEBER WATER IMPROVEMENT DISTRICT. UTAH DDW APPROVAL 6/2020
DESIGNED: RP/MD	
CHECKED: RR/MD	
REV 1:	
REV 2:	
REV 3:	
REV 4:	
REV 5:	

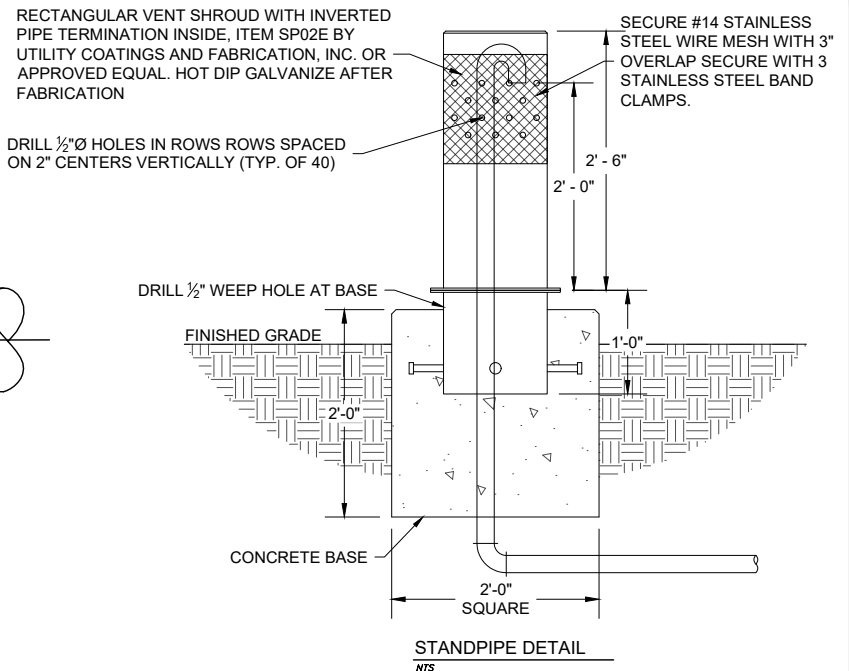
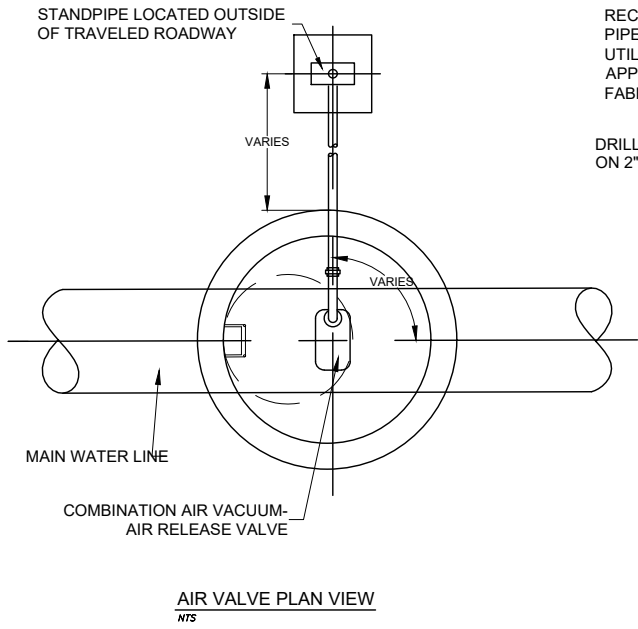


STANDARD WATER DETAILS
TAYLOR WEST WEBER
WATER IMPROVEMENT DISTRICT
HYDRANT LOOP DETAIL

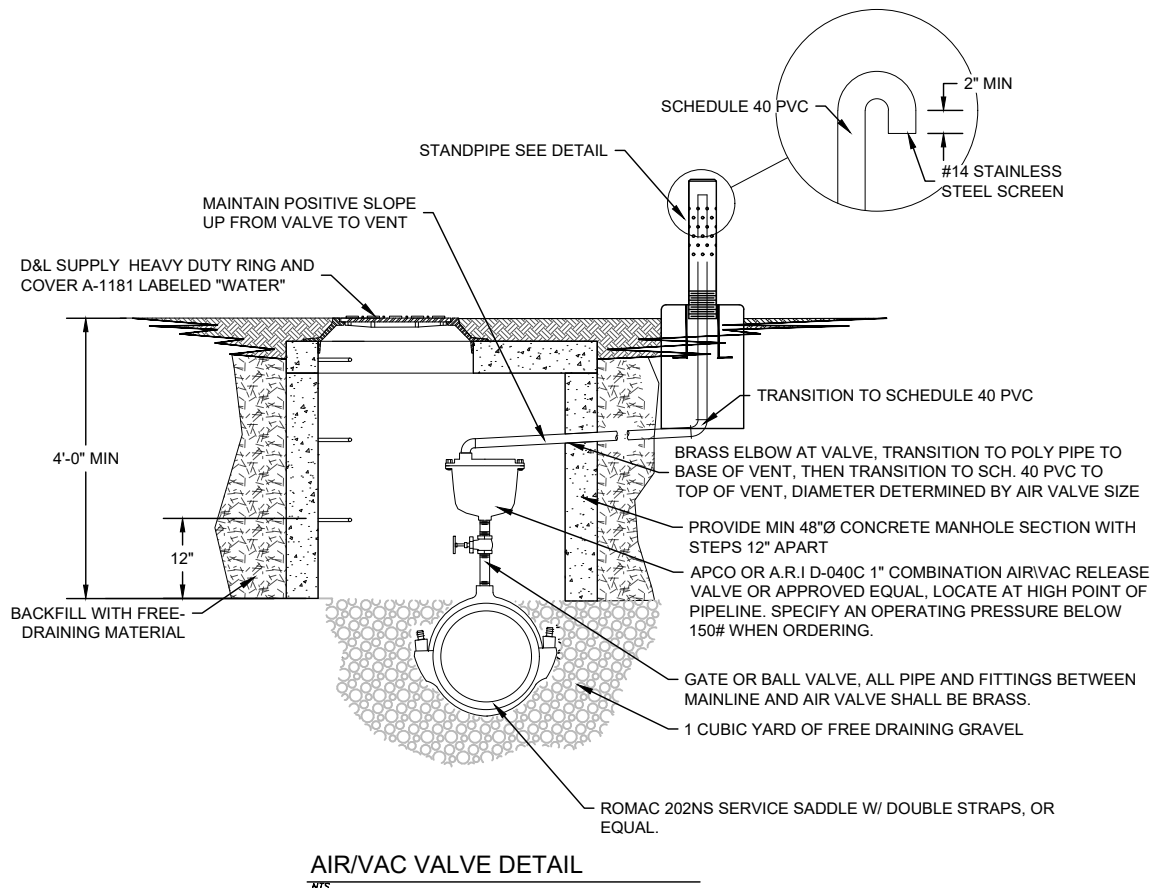
SHEET 3A



GARDNER ENGINEERING
CIVIL • LAND PLANNING
MUNICIPAL • LAND SURVEYING
1880 W 2100S, WEST HAVEN, UT 84405
P 801.476.0202 F 801.476.0066



NOTES:
1. LOCATE STANDPIPE WELL OUTSIDE TRAVELED ROADWAY OR AS DIRECTED BY THE ENGINEER. INSTALL 4" STEEL PIPE FOR A 1" AIR VAC/AIR RELEASE VALVE AND 6" STEEL PIPE FOR A 2" VALVE.



6 COMBINATION AIR/VAC VALVE DETAILS

NTS

r:\2001 - tw\standards\2025\twwid construction standard details 2025 rev-0.dwg

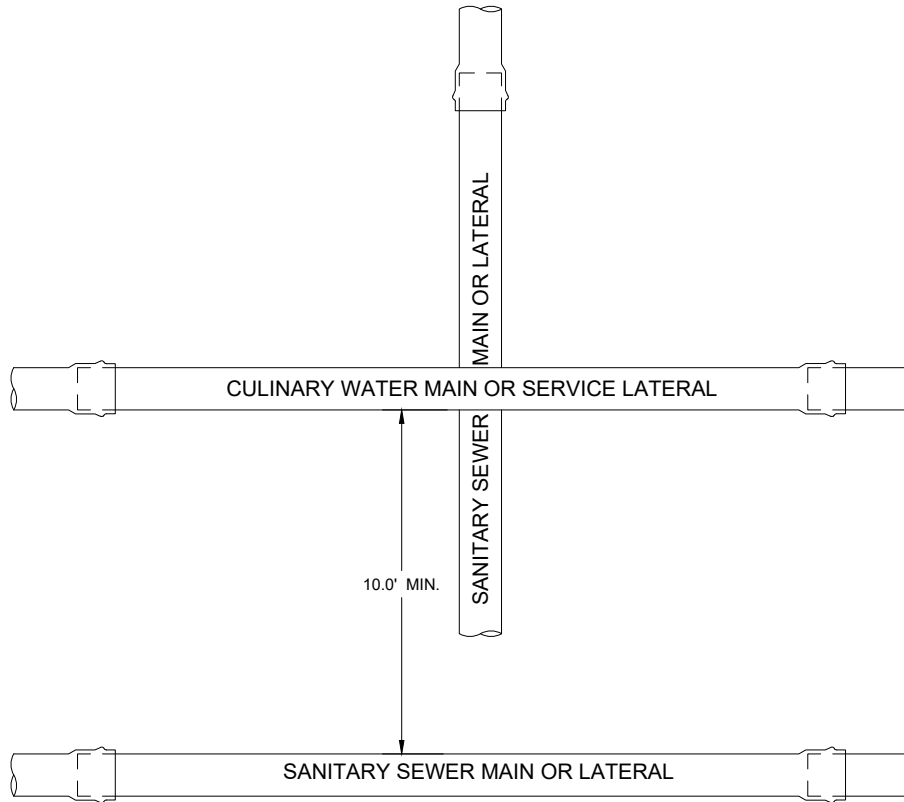
DRAFTED: RP	DEVIATIONS FROM STANDARDS MUST BE APPROVED
DESIGNED: RP/MD	BY TAYLOR WEST WEBER WATER IMPROVEMENT
CHECKED: RR/MD	DISTRICT. UTAH DDW APPROVAL 6/2020
REV 1:	
REV 2:	
REV 3:	
REV 4:	
REV 5:	



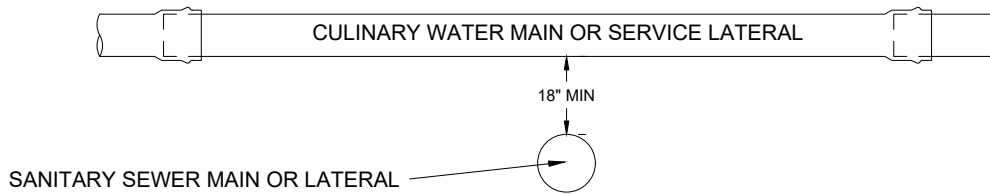
STANDARD WATER DETAILS
TAYLOR WEST WEBER
WATER IMPROVEMENT DISTRICT
COMBINATION AIR/VAC VALVE DETAIL SHEET 4



NOTE:
 WATER MAINS AND SEWER LINES SHALL NOT BE INSTALLED IN THE SAME TRENCH. WHERE LOCAL CONDITIONS MAKE IT IMPOSSIBLE TO INSTALL WATER OR SEWER LINES AT THE SEPARATION DISTANCES SHOWN HERE, AN EXCEPTION TO THE STANDARD MAY BE POSSIBLE. THE ENTITY SEEKING THE EXCEPTION SHALL INITIATE AND PURSUE A REQUEST FOR A SEPARATION EXCEPTION WITH THE STATE DIVISION OF DRINKING WATER, IN ACCORDANCE WITH R309-550-7 OF THE STATE OF UTAH ADMINISTRATIVE RULES.



PLAN VIEW



PROFILE VIEW

7 TYPICAL SEWER CROSSING DETAIL

NTS

r:\2001 - twwstandards\2025\twwid construction standard details 2025 rev-0.dwg

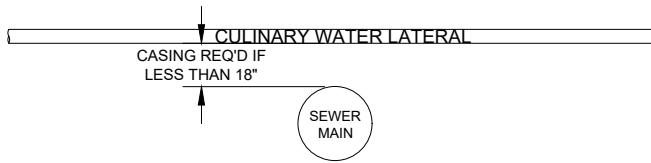
DRAFTED: RP	DEVIATIONS FROM STANDARDS MUST BE APPROVED
DESIGNED: RP/MD	BY TAYLOR WEST WEBER WATER IMPROVEMENT
CHECKED: RR/MD	DISTRICT. UTAH DDW APPROVAL 6/2020
REV 1:	
REV 2:	
REV 3:	
REV 4:	
REV 5:	



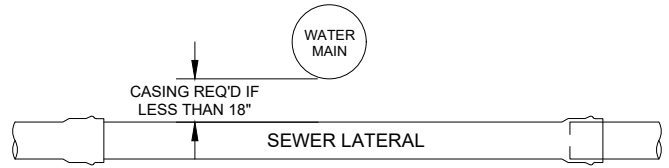
STANDARD WATER DETAILS	
TAYLOR WEST WEBER	
WATER IMPROVEMENT DISTRICT	
TYPICAL SEWER CROSSING	SHEET 5

GARDNER ENGINEERING
 CIVIL • LAND PLANNING
 MUNICIPAL • LAND SURVEYING
 1680 W 2100S, WEST HAVEN, UT 84405
 P 801.476.0202 F 801.476.0066

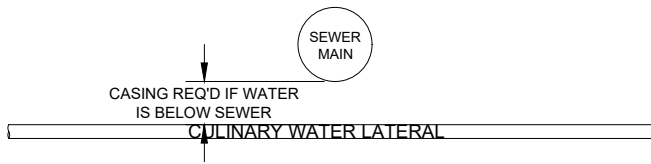
WATER LATERAL OVER SEWER MAIN



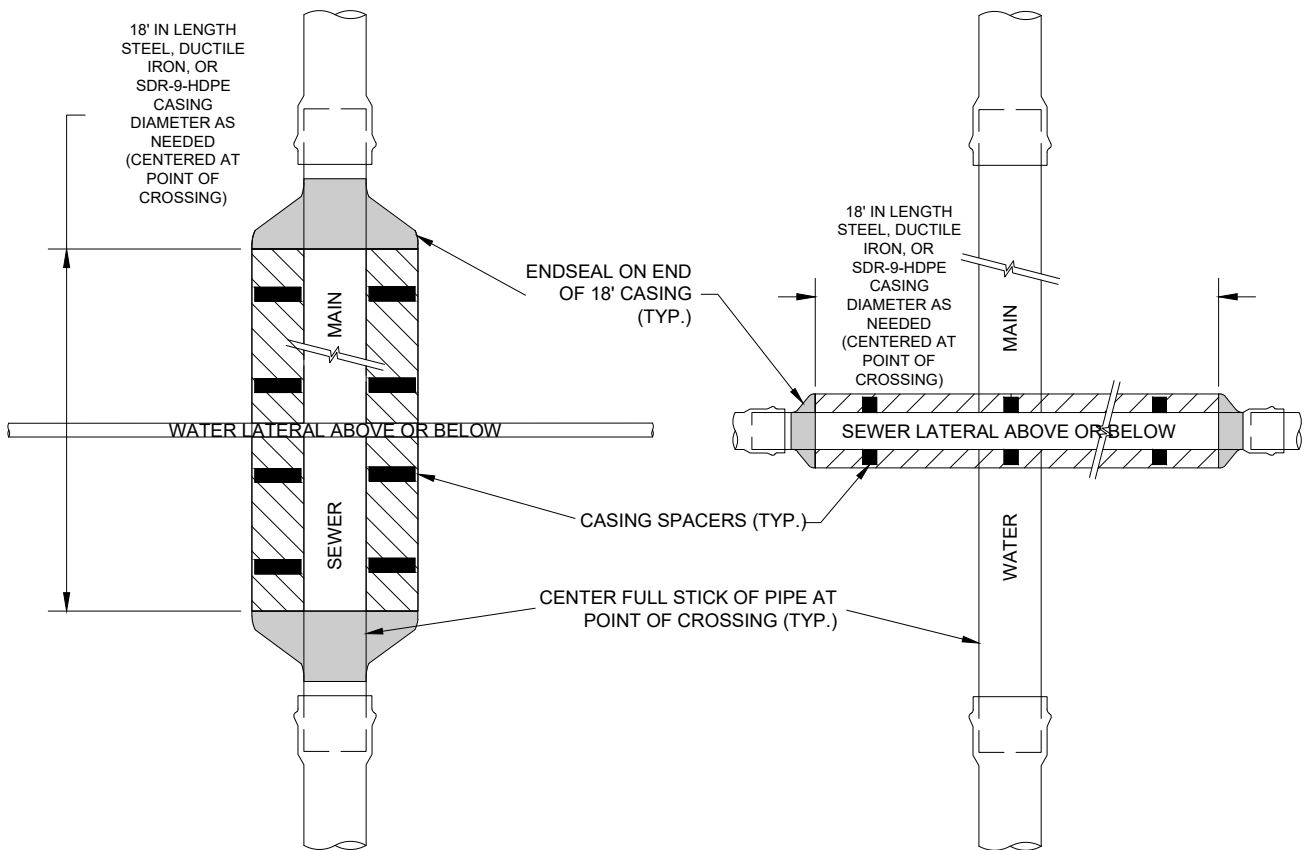
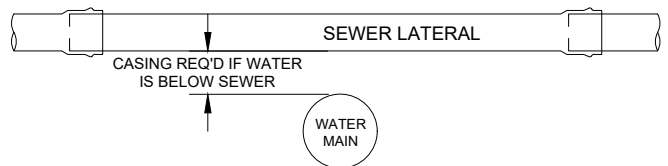
WATER MAIN OVER SEWER LATERAL



WATER LATERAL UNDER SEWER MAIN



WATER MAIN UNDER SEWER LATERAL



8 SEWER/WATER VERTICAL SEPARATION EXCEPTION DETAIL

NTS

r:\2001 - tw\standards\2025\twwid construction standard details 2025 rev-0.dwg

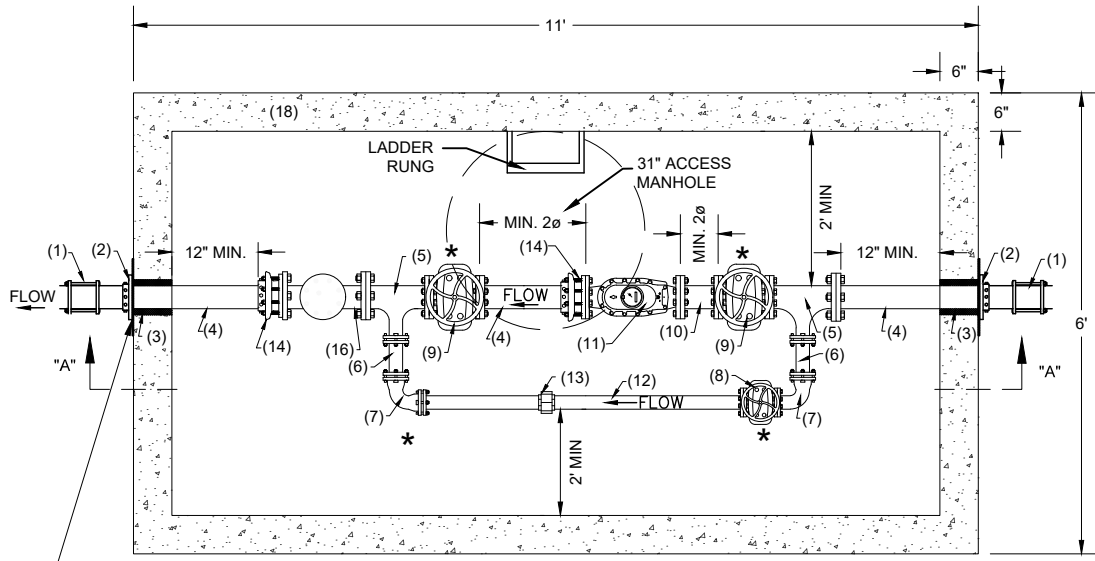
DRAFTED: RP	DEVIATIONS FROM STANDARDS MUST BE APPROVED BY TAYLOR WEST WEBER WATER IMPROVEMENT DISTRICT. UTAH DDW APPROVAL 6/2020
DESIGNED: RP/MD	
CHECKED: RR/MD	
REV 1: 11-12-21 ADDED SEWER/WATER CROSSING	
REV 2: 4-21-22 REVISED CASING TO ALWAYS BE ON SEWER LINES	
REV 3:	
REV 4:	
REV 5:	



STANDARD WATER DETAILS
 TAYLOR WEST WEBER
 WATER IMPROVEMENT DISTRICT
 SEWER/WATER CROSSING

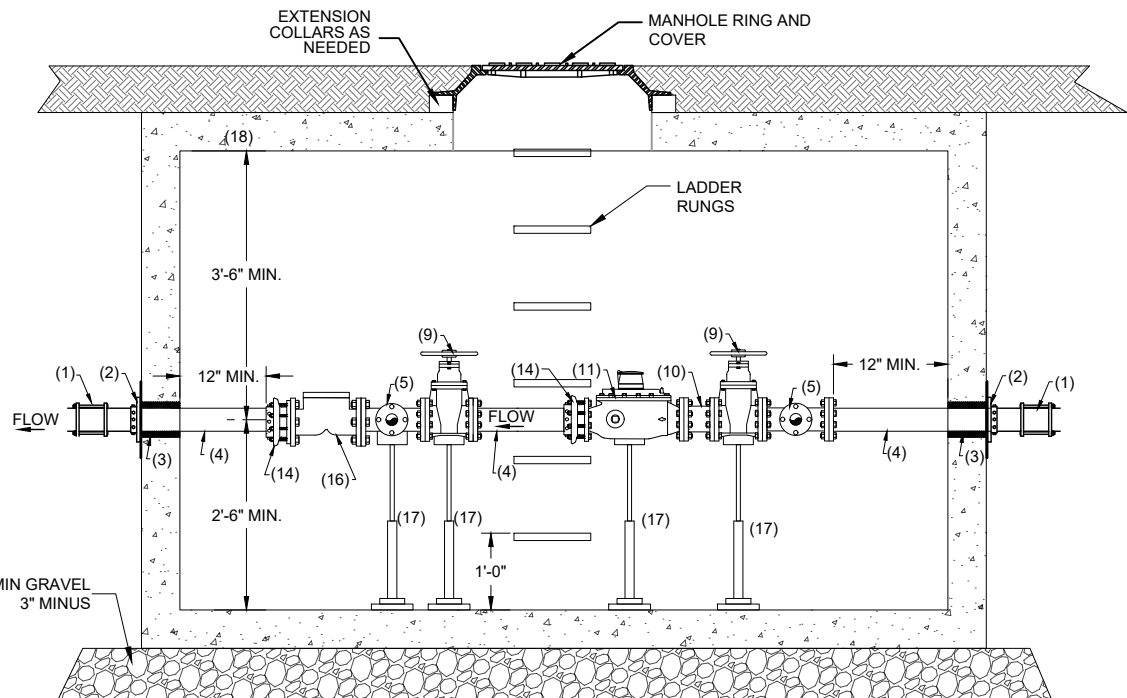
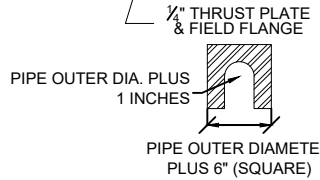
SHEET 6





PLAN VIEW

* PIPE STAND LOCATIONS



SECTION A-A

12A

3" WATER METER DETAIL

SEE BILL OF MATERIALS ON NEXT SHEET

1"=2.5'

r:\2001 - tw\standards\2025\twwid construction standard details 2025 rev-0.dwg

DRAFTED: RP	DEVIATIONS FROM STANDARDS MUST BE APPROVED BY TAYLOR WEST WEBER WATER IMPROVEMENT DISTRICT. UTAH DDW APPROVAL 6/2020
DESIGNED: RP/MD	
CHECKED: RR/MD	
REV 1: 6/9/2023 OCTAVE METER, NO STRAINER, CHECK VALVE	
REV 2:	
REV 3:	
REV 4:	
REV 5:	



STANDARD WATER DETAILS
 TAYLOR WEST WEBER
 WATER IMPROVEMENT DISTRICT
3" WATER METER DETAIL

SHEET 9A

GARDNER ENGINEERING
 CIVIL • LAND PLANNING
 MUNICIPAL • LAND SURVEYING
 1680 W 2100S, WEST HAVEN, UT 84405
 P 801.476.0202 F 801.476.0066

Bill of Materials - 3" Meter

#	Qty	Item	Note
1	2	3" COUPLING	
2	2	FIELD FLANGE AND 1/4" STEEL THRUST PLATE	
3	2	CORED HOLE AND GROUT PACK	
4	3	3" FL X PE PIPE	FIELD MEASURE AND CUT TO FINAL LENGTH
5	2	3" X 2" TEE	
6	2	2" FL X PE PIPE	FIELD MEASURE AND CUT TO FINAL LENGTH
7	2	2" 90° ELBOW	END CONNECTIONS AS NEEDED
8	1	2" GATE VALVE WITH HANDWHEEL	PROVIDE A STAINLESS STEEL CHAIN AND BRASS LOCK
9	2	3" GATE VALVE WITH HANDWHEEL	PROVIDE 1 ONLY STAINLESS STEEL CHAIN AND BRASS LOCK
10	1	3" PIPE FL X FL	6" LENGTH
11	1	3" ULTRASONIC OCTAVE MASTER METER	WITH REGISTER AND MOUNTED ANTENNA
12	1	2" PIPE	FIELD MEASURE AND CUT TO FINAL LENGTH
13	1	2" COUPLING	FITTING FOR EASE OF MAINTENANCE. ROMAC MACRO O.A.E
14	1	3" RESTRAINED FLANGE COUPLING ADAPTER	
15	1	INTENTIONALLY BLANK	
16	1	3" RESILIENT SEATED CHECK VALVE	AFC 2100 RESILIENT SEATED CHECK VALVE OR APPROVED EQUAL
17	4	ADJUSTABLE PIPE STAND	BOLT TO FLOOR WHEN ADJUSTMENTS COMPLETE, USE SS HARDWARE
18	1	CONCRETE UTILITY VAULT WITH RING AND COVER	PRECAST OR CAST IN PLACE VAULT WITH MIN INSIDE DIMENSIONS OF 5' X 10' X 6', H-20 LOADING, WATER TIGHT JOINTS

NOTES:

A STAINLESS STEEL CHAIN AND BRASS LOCK SHALL BE PROVIDED TO LOCK THE GATE VALVES IN POSITION.

ALL PIPE AND FITTINGS MUST BE EITHER DUCTILE IRON OR BRASS (FOR REFERENCE, PLUMBING AND VAULT ARE SHOWN TO SCALE USING DUCTILE IRON).

ALL CONNECTIONS WITHIN THE VAULT MUST BE RESTRAINED.

12B 3" WATER METER BOM

NTS

DRAFTED: RP	DEVIATIONS FROM STANDARDS MUST BE APPROVED
DESIGNED: RP/MD	BY TAYLOR WEST WEBER WATER IMPROVEMENT
CHECKED: RR/MD	DISTRICT. UTAH DDW APPROVAL 6/2020
REV 1:	6/9/2023 OCTAVE METER, NO STRAINER, CHECK VALVE
REV 2:	
REV 3:	
REV 4:	
REV 5:	



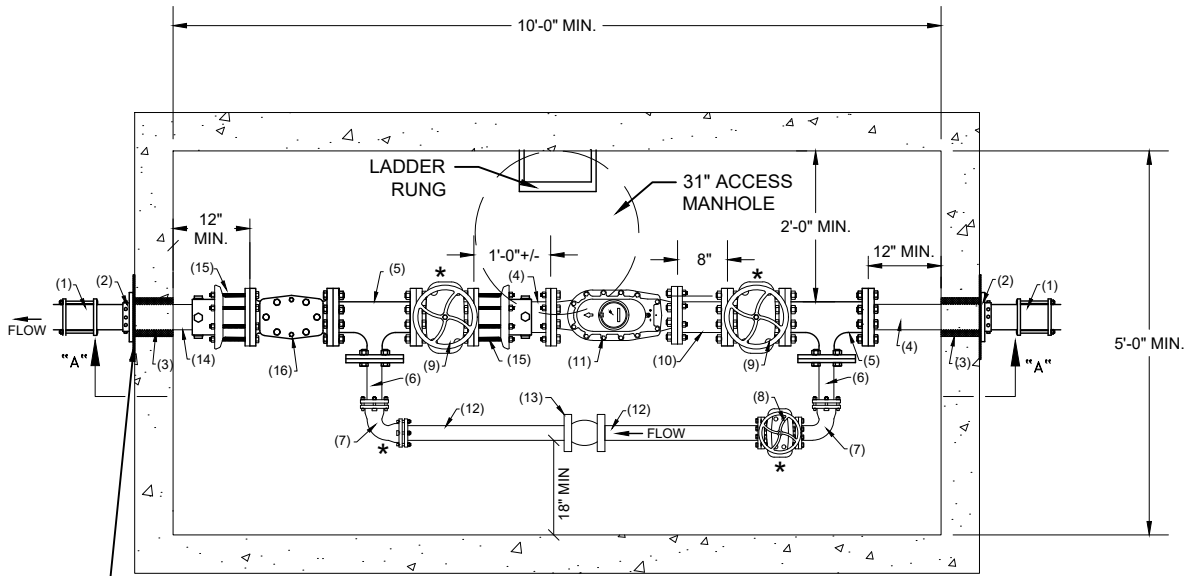
STANDARD WATER DETAILS
 TAYLOR WEST WEBER
 WATER IMPROVEMENT DISTRICT
3" WATER METER BOM

SHEET 9B



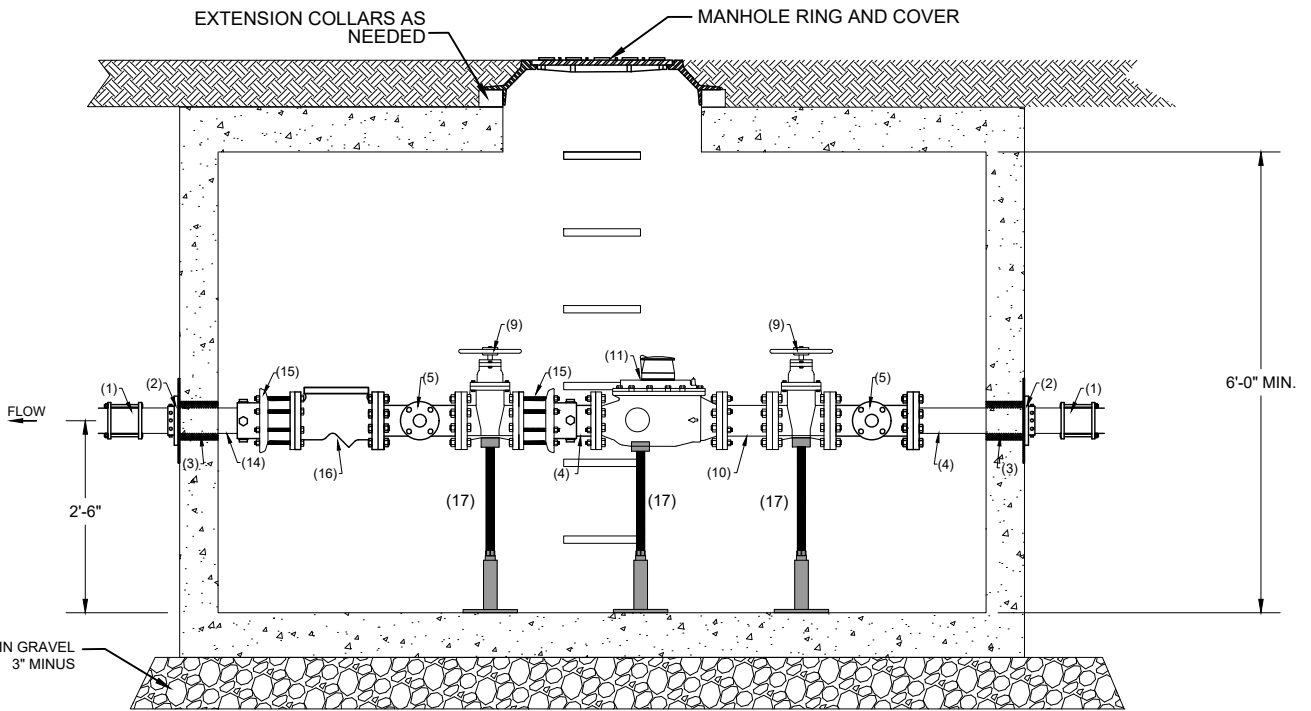
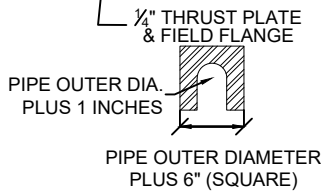
GARDNER ENGINEERING
 CIVIL ■ LAND PLANNING
 MUNICIPAL ■ LAND SURVEYING
 1880 W 2100S, WEST HAVEN, UT 84408
 P 801.476.0202 F 801.476.0066

r:\2001 - twwstandards\2025\twwid construction standard details 2025 rev-0.dwg



PLAN VIEW

* PIPE STAND LOCATIONS



SECTION A-A

13A

4" WATER METER DETAIL

SEE BILL OF MATERIALS ON NEXT SHEET

1" = 2.5'

r:\2001 - tw\standards\2025\twwid construction standard details 2025 rev-0.dwg

DRAFTED: RP	DEVIATIONS FROM STANDARDS MUST BE APPROVED
DESIGNED: RP/MD	BY TAYLOR WEST WEBER WATER IMPROVEMENT
CHECKED: RR/MD	DISTRICT. UTAH DDW APPROVAL 6/2020
REV 1: 6/9/2023 OCTAVE METER, NO STRAINER, CHECK VALVE	
REV 2:	
REV 3:	
REV 4:	
REV 5:	



STANDARD WATER DETAILS
 TAYLOR WEST WEBER
 WATER IMPROVEMENT DISTRICT
 4" WATER METER DETAIL

SHEET 10A



GARDNER ENGINEERING
 CIVIL • LAND PLANNING
 MUNICIPAL • LAND SURVEYING
 1680 W 2100S, WEST HAVEN, UT 84409
 P 801.476.0202 F 801.476.0068

Bill of Materials - 4" Meter

#	Qty	Item	Note
1	2	4" COUPLING	
2	2	FIELD FLANGE AND 1/4" STEEL THRUST PLATE	
3	2	CORED HOLE AND GROUT PACK	
4	2	4" FL X PE PIPE	FIELD MEASURE AND CUT TO FINAL LENGTH
5	2	4" X 2" FL TEE	
6	2	2" FL X PE PIPE	FIELD MEASURE AND CUT TO FINAL LENGTH, USE DIP
7	2	2" 90° ELBOW	END CONNECTIONS AS NEEDED
8	1	2" FL GATE VALVE WITH HANDWHEEL	
9	2	4" FL GATE VALVE WITH HANDWHEEL	
10	1	4" PIPE FL X FL	8" LENGTH
11	1	4" ULTRASONIC OCTAVE MASTER METER	WITH REGISTER AND MOUNTED ANTENNA
12	1	2" FL X PE PIPE	FIELD MEASURE AND CUT TO FINAL LENGTH, USE DIP
13	1	2" COUPLING	FITTING FOR EASE OF MAINTENANCE. ROMAC MACRO O.A.E.
14	1	4" FL X PE PIPE	FIELD MEASURE AND CUT TO FINAL LENGTH
15	1	4" RESTRAINED FLANGED COUPLING ADAPTER	
16	1	4" RESILIENT SEATED CHECK VALVE	AFC 2100 RESILIENT SEATED CHECK VALVE OR APPROVED EQUAL
17	4	ADJUSTABLE PIPE STAND	BOLT TO FLOOR WHEN ADJUSTMENTS COMPLETE, USE SS HARDWARE
18	1	5' X 10' CONCRETE UTILITY VAULT WITH RING AND COVER	AMCOR PRECAST, H-20 LOADING, WATER TIGHT JOINTS

NOTES:

A STAINLESS STEEL CHAIN AND BRASS LOCK SHALL BE PROVIDED TO LOCK THE GATE VALVES IN POSITION.

ALL PIPE AND FITTINGS MUST BE EITHER DUCTILE IRON OR BRASS (FOR REFERENCE, PLUMBING AND VAULT ARE SHOWN TO SCALE USING DUCTILE IRON).

ALL CONNECTIONS WITHIN THE VAULT MUST BE RESTRAINED.

13B 4" WATER METER BOM

NTS

DRAFTED: RP	DEVIATIONS FROM STANDARDS MUST BE APPROVED
DESIGNED: RP/MD	BY TAYLOR WEST WEBER WATER IMPROVEMENT
CHECKED: RR/MD	DISTRICT. UTAH DDW APPROVAL 6/2020
REV 1:	6/9/2023.OCTAVE.METER.NO.STRAINER.CHECK VALVE
REV 2:	
REV 3:	
REV 4:	
REV 5:	

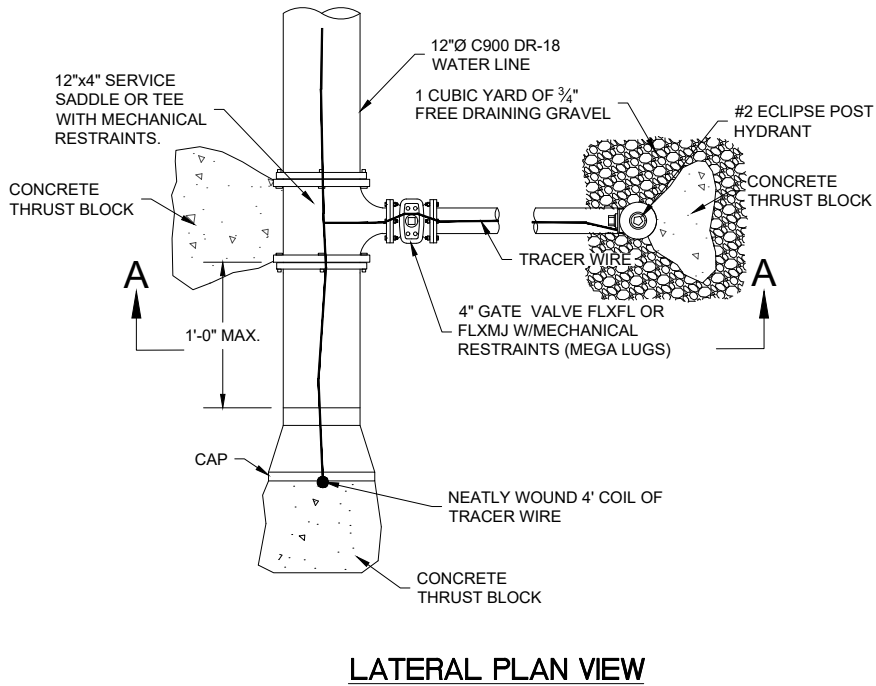
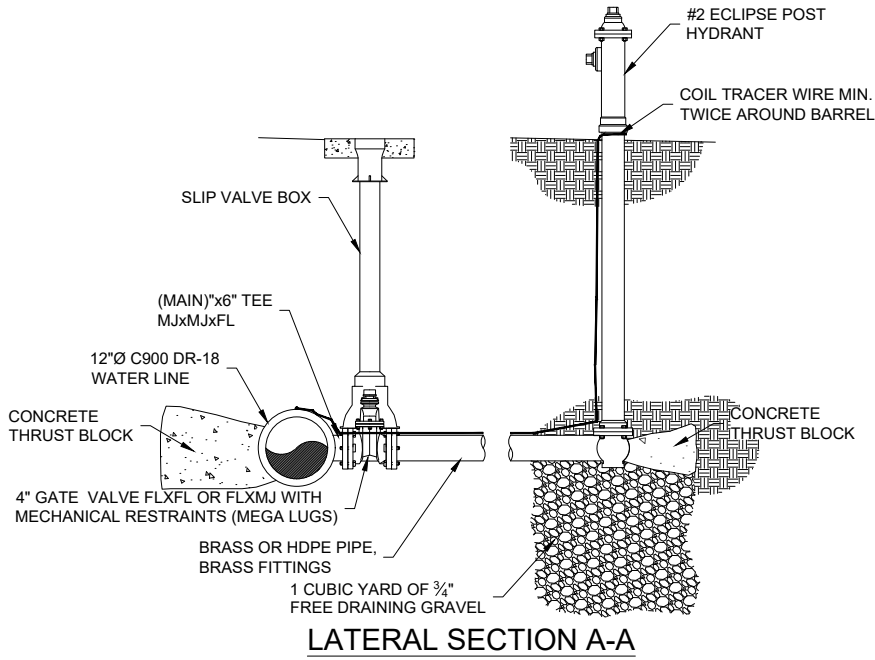


STANDARD WATER DETAILS
 TAYLOR WEST WEBER
 WATER IMPROVEMENT DISTRICT
4" WATER METER BOM

SHEET 10B



r:\2001 - twwstandards\2025\twwid construction standard details 2025 rev-0.dwg



14A POST HYDRANT DETAIL

NTS

r:\2001 - tw\standards\2025\wwwid construction standard details 2025 rev-0.dwg

DRAFTED: RP	DEVIATIONS FROM STANDARDS MUST BE APPROVED
DESIGNED: RP/MD	BY TAYLOR WEST WEBER WATER IMPROVEMENT
CHECKED: RR/MD	DISTRICT. UTAH DDW APPROVAL 6/2020
REV 1:	
REV 2:	
REV 3:	
REV 4:	
REV 5:	

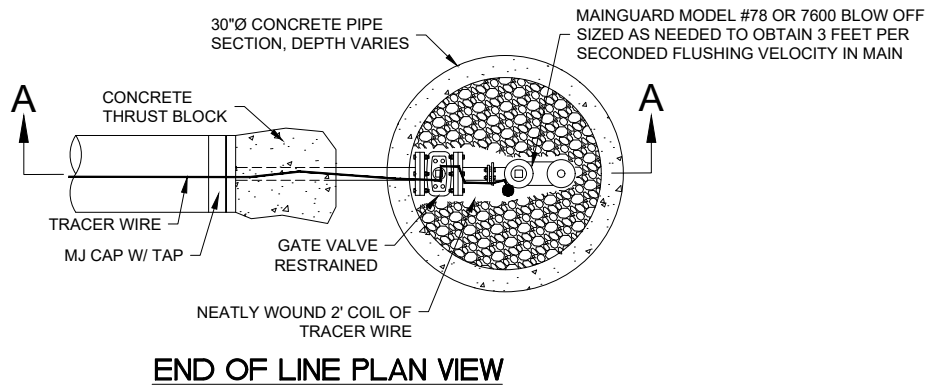
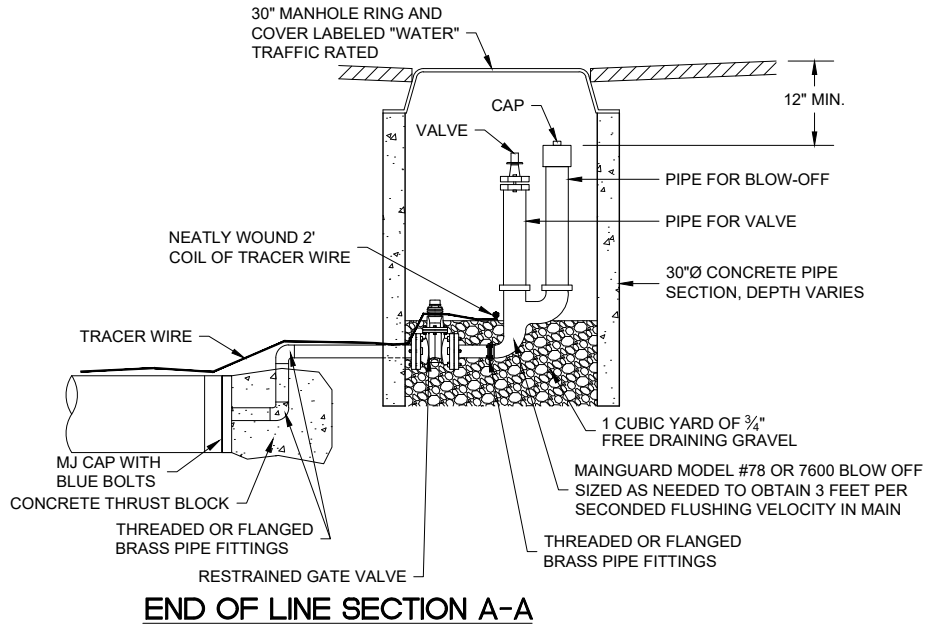


STANDARD WATER DETAILS
 TAYLOR WEST WEBER
 WATER IMPROVEMENT DISTRICT
 BLOW OFF DETAIL

SHEET 11A



GARDNER ENGINEERING
 CIVIL • LAND PLANNING
 MUNICIPAL • LAND SURVEYING
 1680 W 2100S, WEST HAVEN, UT 84405
 P 801.476.0202 F 801.476.0066



14B

BLOW OFF DETAIL

NTS

DRAFTED: RP	DEVIATIONS FROM STANDARDS MUST BE APPROVED
DESIGNED: RP/MD	BY TAYLOR WEST WEBER WATER IMPROVEMENT
CHECKED: RR/MD	DISTRICT. UTAH DDW APPROVAL 6/2020
REV 1:	
REV 2:	
REV 3:	
REV 4:	
REV 5:	



STANDARD WATER DETAILS
TAYLOR WEST WEBER
WATER IMPROVEMENT DISTRICT

BLOW OFF DETAIL

SHEET 11B

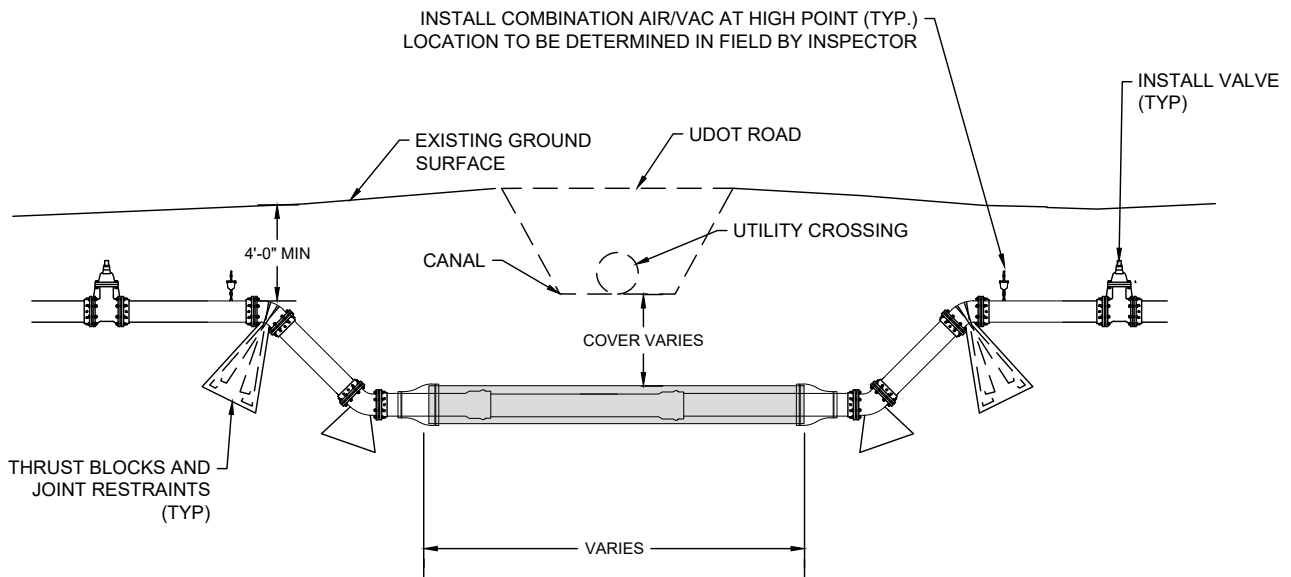


GARDNER ENGINEERING
CIVIL • LAND PLANNING
MUNICIPAL • LAND SURVEYING
1680 W 2100S, WEST HAVEN, UT 84405
P 801.476.0202 F 801.476.0066

COVER (MIN.)	
LAYTON CANAL	4'-0"
HOOPER CANAL	2'-0"
WILSON CANAL	2'-0"
SLOUGH	2'-0"
UDOT ROAD	SEE UDOT DWG DD16
ANY UTILITY CROSSING	1'-6"

PIPE SIZE	CASING SIZE*
8"	16"
10"	18"
12"	24"
14"	30"
16"-20"	30"

* CASING WALL THICKNESS, SEE SPECS SECTION 5.3.2.19



NOTE:

1. CASINGS REQUIRE CENTRALIZING SPACERS AND END SEALS W/ S.S. BAND CLAMPS SUBMITTED TO INSPECTOR FOR APPROVAL PRIOR TO INSTALLATION.
2. PVC PIPE REQUIRES JOINT RESTRAINTS EITHER SELF- RESTRAINING GASKETS OR MECHANICAL JOINT RESTRAINTS ON PIPE JOINTS INSIDE OF CASING AND ONE PIPE JOINT EACH SIDE OF CASING.
3. ISOLATION VALVE INSTALLATION IS REQUIRED ON EACH SIDE OF CASING.
4. COMBINATION AIR/VAC VALVE INSTALLATION IS REQUIRED ON EACH SIDE OF LOOPED CROSSINGS.
5. INSTALLATION OF A SAMPLING TAP OR OTHER ACCEPTABLE MEANS OF SAMPLING WILL BE REQUIRED TO ALLOW FOR REPRESENTATIVE WATER QUALITY TESTING ON THE UPSTREAM AND DOWNSTREAM SIDE OF THE CROSSING, IF THE DISTRICT INSPECTOR DETERMINES THAT ANOTHER MEANS OF SAMPLING DOES NOT EXIST NEAR THE GIVEN LOCATION.
6. CROSSINGS SHALL BE COMMISSIONED AS AN INTEGRAL PART OF THE SURROUNDING PIPE SYSTEM (FLUSH, DISINFECT, PRESSURE TEST).
7. SEE SPECS SEC 5.3.2.19-20, NON PERPENDICULAR UTILITY CROSSINGS LONGER THAN 20FT TO HAVE SEPARATION WILL REQUIRE A CASING, PERPENDICULAR UTILITY CROSSINGS THAT ONLY REQUIRE 10FT EACHWAY (20FT) TOTAL CAN BE SLEEVED

15

CANAL/UDOT/UTILITY CROSSING DETAIL

DRAFTED: RP	DEVIATIONS FROM STANDARDS MUST BE APPROVED
DESIGNED: RP/MD	BY TAYLOR WEST WEBER WATER IMPROVEMENT
CHECKED: RR/MD	DISTRICT. UTAH DDW APPROVAL 6/2020
REV 1:	
REV 2:	
REV 3:	
REV 4:	
REV 5:	



STANDARD WATER DETAILS
TAYLOR WEST WEBER
WATER IMPROVEMENT DISTRICT
CANAL/UDOT CROSSING DETAIL
SHEET 12



GARDNER ENGINEERING
CIVIL • LAND PLANNING
MUNICIPAL • LAND SURVEYING
1880 W 2100S, WEST HAVEN, UT 84405
P 801.476.0202 F 801.476.0066